

Colgate[®]

powered by **OMRON**

ProClinical[®] **C350**

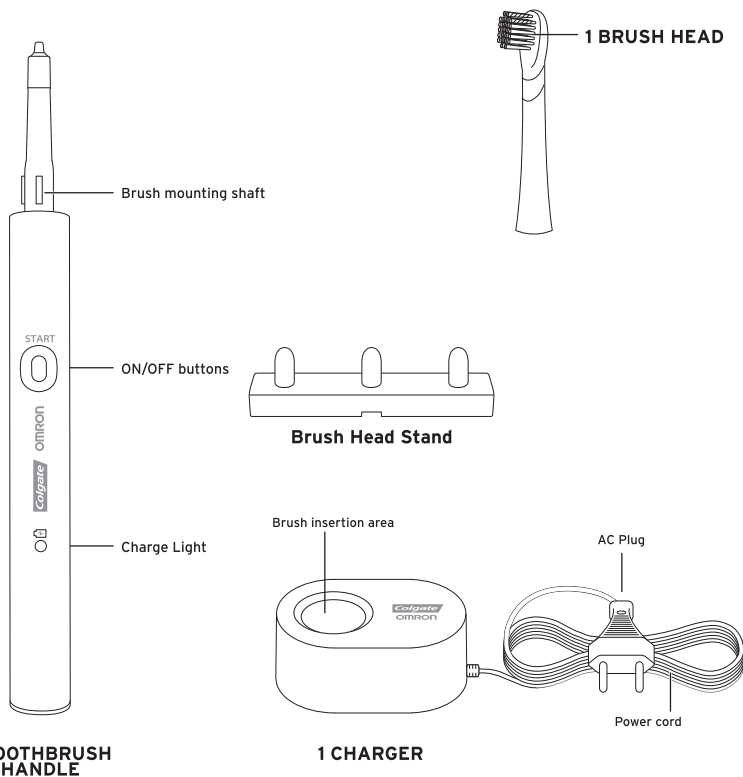
INSTRUCTION MANUAL

ENJOY YOUR BRUSH

It has a unique cleaning action, combining up-down and side-to-side strokes for healthier teeth and gums.

Please follow all instructions and save this manual for future use.

PARTS



IMPORTANT SAFEGUARDS

READ ALL INSTRUCTIONS BEFORE USING

For concerns contact Colgate Consumer Affairs. Basic safety precautions should always be followed including the following:

DANGER

- Do not place or store product where it can fall or be pulled into a tub or sink.
- Do not place in or drop into water or other liquid.
- Do not reach for a product that has fallen into water. Unplug immediately.
- Do not touch the AC adaptor with wet hands.
- AC adaptors should always be completely dry when connecting to power.

WARNING

- The Supply Cord cannot be replaced. If the cord is damaged the appliance should be scrapped.
- This appliance can be used by children aged from 8 years and above and persons with reduced physical, sensory or mental capabilities or lack of experience and knowledge if they have been given supervision or instruction concerning use of the appliance in a safe way and understand the hazards involved. Children shall not play with the appliance. Cleaning and user maintenance shall not be made by children without supervision.
- UK supply connection: Type C plug provided is intended for use in a Shaver Socket. It is not suitable for connection to a UK mains socket unless used with an approved (e.g. BSI or ASTA) FUSED Converter Plug with a 3A max fuse or Shaver Adaptor with 1A fuse.
- Use charger only within rated capacity of outlets or voltages specified.
- Do not use outdoors.
- Keep product away from heated surfaces.
- Use this product only for its intended use described in this manual.
- Use the toothbrush with brush heads and charger provided by manufacturer only.
- No user serviceable parts. Do not disassemble the handle except for battery disposal, as it may cause personal injury or device failure.
- Stop using this product if it is damaged in anyway (cord, plug, brush head, toothbrush handle, charger, and/or AC adaptor).
- Not For Children under 3. Keep out of reach of small children.
- If after using this toothbrush, you experience excessive bleeding or if bleeding continues to occur after a week of use, please contact your dentist as it may be an indication of a more serious oral care issue.
- If you are undergoing treatment for any oral care condition, consult your dental professional prior to use.

CAUTION

- For energy saving purposes, charge the main unit only when the battery level is too low. When not in use, keep the charger unplugged from the socket.
- When taking out the battery for disposal, use caution not to short the positive (+) and negative(-) terminals.

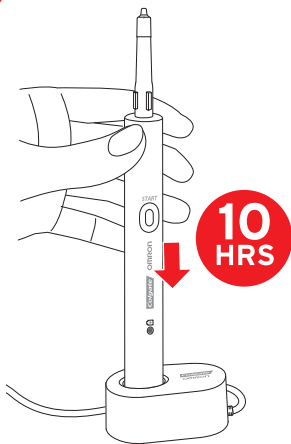
ELECTROMAGNETIC COMPATIBILITY

The Colgate® ProClinical® electric toothbrush complies with all standards regarding electromagnetic fields. It is safe to use if handled properly according to the instructions provided in this manual. If you have a pacemaker or an implanted device, consult your physician and the device manufacturer prior to use.

SAVE THESE INSTRUCTIONS

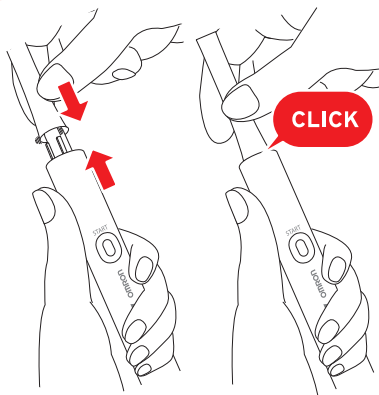
1

QUICK START



CHARGE

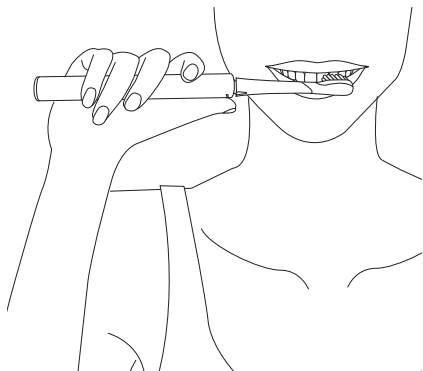
- Put handle into charger.
 - Plug into outlet for 10 hours to ensure a full charge. (Adaptor may be required, not provided.)
 - Light on handle is red when charging.
- | | |
|-----------------|---------|
| • Charge Light: | (RED) |
| CHARGING: | ON |
| FULLY CHARGED: | OFF |
| LOW BATTERY: | FLASHES |

2

ATTACH BRUSH HEAD

- Slide brush head onto handle.
- Match grooves.
- Push until you feel a click.

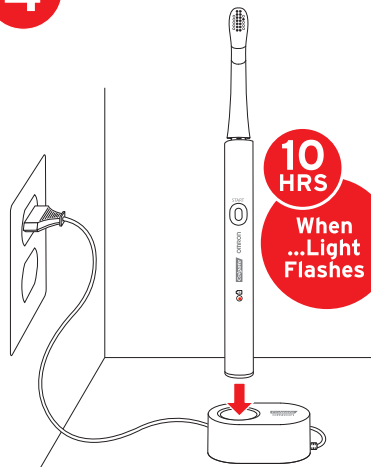
3



BRUSH

- **Wet brush, apply toothpaste.** Put brush in mouth; press **ON**.
- **Move brush slowly** over teeth.
- **Brush pivots from side-to-side to up & down.** Cleans **between and behind teeth, molars,** and along the **gum line.**
- **Timer alerts every 30 seconds** to brush different area of mouth.
- **Brush stops after 2 minutes.** Rinse brush. Wipe or shake off water.

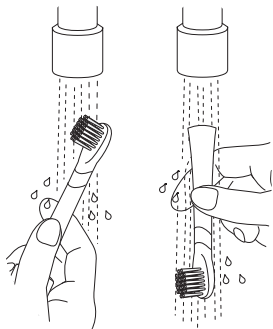
4



CHARGE

- Charge 10 hrs when battery Charge Light **FLASHES RED.**
- Charge Lights up **RED** when charging.
- After the battery is fully charged, the Charge Light turns off.
- Leave charger unplugged between charges.
- Place charger on a flat surface (not carpet) away from the sink or any water.

CLEANING BRUSH AND CHARGER



- Wash brush head with water.
- Wipe handle and charger with damp cloth.
- Dry handle and charger completely before putting-back handle in charger.
- Never put charger in water.

BATTERY REMOVAL FOR RECYCLING



REMOVE BATTERY BEFORE DISPOSAL

Remove recyclable rechargeable battery in compliance with environmental regulations before disposing of toothbrush. Do not open handle unless permanently disposing (will void warranty).

TO REMOVE BATTERY FROM HANDLE:



1. Remove cap and rubber filler.
2. Remove screw on bottom of handle with screwdriver.
3. Lift off handle cover.
4. Peel off tape to remove battery. Cut cords.
5. Tape end of battery to prevent shorting.

CORRECT DISPOSAL



Do not throw away this product with normal household waste at the end of its life. Always remove battery before discarding. Please use a return collection system to ensure responsible and environmentally safe recycling of the device and the battery.

TROUBLESHOOTING

PROBLEM	LIKELY CAUSE	SOLUTION
Tickling sensation while brushing	It is normal to experience a slight tickling sensation when you first start using this brush.	After a week you will become more accustomed to this brush and the sensations will diminish.
Brush head rattles or is unstable in use	Brush head is not correctly attached to the handle.	Re-attach brush head by matching grooves and push until you feel a click .
Slow or no movement	Battery level is too low.	Place in charger and charge for 10 hours before use.
Toothbrush and charger are warm	It is normal for the brush and charger to slightly warm while charging.	N/A
Charge indicator light does not light up when brush is placed in charger	Charger is not properly plugged in or outlet has no power.	Check that the charger is properly plugged in and socket is live.
Toothbrush is charged but loses power after a short time of use	For first time use or use after a long period of not using, the battery requires 10 hours of charge.	Place in charger and charge continuously for 10 hours.

If your problem is not solved by the suggestions above, please contact the Colgate Consumer Affairs Centre on 00-800-321-321-32 (free from land lines).

30 DAY CHALLENGE

Try Colgate® ProClinical® toothbrush for 30 days from date of purchase. If you are not satisfied with this product, return the product within 30 days of purchase for a refund of the purchase price (shipping and handling excluded). You must return the product in its original box with all contents: handle, refill brush heads, charger, travel case (if applicable), together with the [original cash register receipt](#) showing this product was purchased in the United Kingdom or Republic of Ireland. Please allow 4-6 weeks for handling. For further details, please contact Colgate Consumer Affairs Centre, 00-800-321-321-32 (free from land lines). Consumers have statutory rights under applicable national laws relating to the sale of consumer products which are in no way affected by the above.

WARRANTY

Colgate-Palmolive UK Limited grants a 2 year warranty on this product from the date of purchase within the United Kingdom or Republic of Ireland. Within the warranty period, we will repair or replace the product (the choice of whether to repair or replace being ours) in the unlikely event of failure or defects resulting from faults in materials or manufacturing. Following any replacement, the warranty will continue from the date of original purchase only. This warranty does not cover brush heads, or any damage due to improper use (any use not in accordance with the User Manual Instructions and Warnings) or normal wear or use. To obtain service within the warranty period, please contact Colgate Consumer Affairs Centre, 00-800-321-321-32.



COLGATE-PALMOLIVE

GB GUILDFORD GU2 8JZ.

IE DUBLIN 24, IRELAND.

www.colgateproclinical.co.uk

*Made in China under license of
Colgate-Palmolive Company, Trademark Owners*

EUEDSN35PLB1

Version 01, January 2014