

## IMPORTANT SAFETY INSTRUCTIONS

When using electrical appliances, especially when children are present, basic safety instructions should always be followed, including the following:

Polythene bags over product or package may be dangerous. To avoid danger of suffocation, keep this wrapper away from babies and children. This bag is not a toy.

**DANGER:** When the unit is used in a bathroom, unplug it after use since the proximity of water presents a hazard even when the unit is switched off.

**WARNING:** Do not use this appliance in or near bathtubs, showers, basins or other vessels containing water.



- Do not immerse in water or other liquids.

- Do not reach for an appliance that has fallen into water. Unplug immediately.

- Take care to avoid contact between the hot surfaces of the unit and the skin, paying particular attention to the face, neck and hands.

- This appliance is not intended for use by persons (including children) with reduced physical, sensory or mental capabilities, or lack of experience or instruction concerning use of the appliance by a person responsible for their safety.

- Children should be supervised to ensure they do not play with the appliance.

**IMPORTANT:** Always unplug the appliance when not in use or before cleaning. Do not leave unattended when plugged in or switched on.

Do not place on any heat sensitive surface and always allow to cool before storing away.

- Do not use any attachments other than those supplied by Conair Australia Pty Ltd.

- Use this appliance only for its intended use and as described in this instruction booklet.

- This appliance is not intended for commercial use.

- Never drop or insert any object into an opening.

- Never block the air openings of the appliance or place on a soft surface such as a bed or couch, where the air openings may be blocked. Keep the air openings free of lint and other debris.

- Do not use outdoors or operate where aerosol (spray) products are being used or where oxygen is being administered.

- Keep the cord away from heated surfaces.

- Do not use an extension cord with this appliance.

- If the supply cord is damaged it must be replaced by the manufacturer, its service agent or similarly qualified persons in order to avoid a hazard.

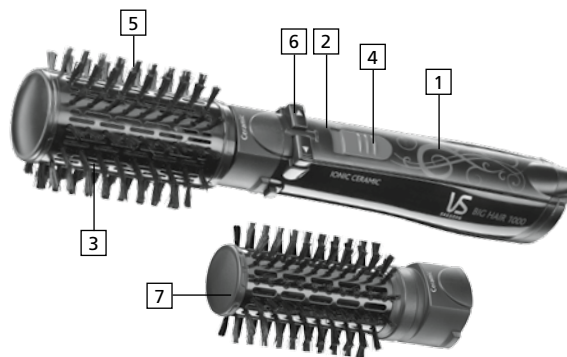
- After use do not wrap the cord around the appliance as in time this may cause the cord to fracture. Coil cord loosely by the side of the appliance in storage.

- Always ensure that the voltage to be used corresponds to the voltage marked on the unit.

- For additional protection, the installation of a residual current device (RCD) with a rated operating current not exceeding 30mA is advisable in the electrical current circuit supplying the bathroom. Ask your installer for advice.

## Big Hair Styler 1000

The VS Sassoon Big Hair Styler 1000 combines the benefits of a hairdryer with a rotating brush in the one appliance to give you total styling control in one hand. Its unique styling action is perfect for adding gorgeous volume and shine to styles. The ceramic barrel gives fullness and body as you style whilst the soft bristles create ultimate shine and smoothness. Suitable to use on all hair lengths the 50mm brush is ideal for medium to long hair and the 38mm brush is ideal for shorter styles.



1. 1000 watts of styling power
2. Ionic conditioning technology with internal ionic generator
3. Removable 50mm ceramic barrel with soft brush bristles ideal for medium to long hair
4. 2 heat/speed settings plus a cool setting
5. Motorised brush
6. Multi-directional switches
7. Removable 38mm ceramic barrel with soft bristles ideal for short hair
8. Protective brush covers included (not shown)

## Heat Settings

Your styler features two heat and a cool setting.

Off = "0" setting on switch

Low heat = "I" setting on switch .

High heat = "II" setting on switch

Cool setting = \* setting on switch (note : brush does not rotate on this setting)

- Use the high heat setting for initial drying, and the low heat setting as the hair begins to dry and for styling.

- Use the cool setting to set the style for longer lasting results after drying and styling.

## Brush rotation settings

Your styler has a two-way , rotation that can be used when styling (heat settings only) .

To make the brush head rotate press the switch marked << and >> on the styler handle. These will make the brush head rotate in a clockwise or anticlockwise direction.

The styler has 2 heat/speed settings plus cool. When the styler is set on the high heat setting the brush head will rotate faster. When the styler is set on the low heat setting the brush head will rotate slower.

**Note: The brush head does not rotate when used on the cool setting.**

The styler can also be used as a fixed head brush for styling.

## Attaching and removing the brush heads

To attach the brush head (50mm or 38mm), line up the guides on the handle and the brush head and press the brush head onto the handle until you hear a click. To remove the brush press on the unlocking buttons located on the sides of the unit and gently pull the brush head off.

## How to use your Big Hair Styler 1000

1. Remove all packaging and promotional labels before use.
2. Remove the protective brush cover from the brush barrel by firmly sliding upwards.
3. Plug the styler into a power outlet and select either the low or high heat settings – Depress the << or >> brush rotation buttons to ensure you understand the rotation direction before styling your hair .
4. Wash and condition your hair as usual. Comb hair before using to detangle.
5. Using a hair dryer, dry your hair first until it is 80% dry. For added volume, turn your head upside down as you dry.
6. Once hair is 80% dry, you should start to create your style using the Big Hair Styler.
7. Ensure you section your hair using clips before styling .
8. Take a hair section to start styling with approx. 2.5cm - 5cm wide and no more than 1cm thick (if you have thick hair make the section around 50mm thick).
9. Slide the on/off temperature switch to either the low or high heat setting.
10. Place the styler under the section of hair, close to the roots and brush through the section to remove tangles (without brush rotating).
11. For added volume at the root of the hair , hold the brush in place at the root (hair section is draped over top of brush) for a few seconds.
12. Move the brush through the hair section (hair is draped over top of brush), towards the ends and as you reach the end of the hair section, start to rotate the brush away from your head by pressing and holding the appropriate rotation direction switch.
13. As you do this it is important to resist the rotation of the brush by pulling the brush downwards. The brush should be rotating through the section of your hair (without the hair becoming wound round the brush head if you are holding the styler with the correct tension against the hair) to create a brushing effect as it dries and styles the hair.

**IMPORTANT!** It may take several attempts to perfect this technique. If the brush spins too quickly and hair wraps around the brush head , simply release the rotation button and remove from the hair. Use the low heat setting (low brush speed) and practise rotating the brush on the lower ends of your hair until you feel comfortable with the styling action. If hair continues to wrap around the barrel you need to increase the downward tension.

It is important to section your hair before styling and style section by section to get the best results.

14. For even more volume, allow the brush to rotate, winding the entire section of hair around the barrel, the brush will move upwards towards your scalp then release the the rotation switch and leave in the hair for a few seconds.
15. To release the section of hair, press and hold the opposite rotation button to unwind the hair section. If using the styler as outlined in points 14. and 15., do not wind the hair too tightly near the scalp as over time this could flatten your bristles.

16. Repeat for each hair section.
17. After use switch off and unplug the appliance.
18. Allow the styler to cool before storing.
19. Place the protective brush shield over the brush head to protect the bristles.

**WARNING!** The ceramic brush barrel will get hot during use . Take care to avoid the hot surface of the styler coming in direct contact with the skin, in particular the eyes, ears, face and neck.

#### Styling tips

- For fine hair types or to gain extra volume use a volumising mousse in your hair while damp before styling.
- To define layers and give shape to styles , follow step 12 and repeat through the section.
- To add volume to the roots and body through the top section of the hair, follow steps 10 to 12 but using an upward motion.
- For long lasting results, follow steps 10 to 14 but then slide the on/off switch to the cool setting for a few seconds, this will set the hair.
- Refer to the 'how to' video on the VS Sassoon website at [www.vssassoon.com.au](http://www.vssassoon.com.au)

#### User Maintenance

**IMPORTANT! Check and clean the styler filter on a regular basis.**– To help maintain optimum performance and prevent overheating of your appliance, the rear filter should be cleaned on a regular basis.

- Ensure that the appliance is switched off, unplugged from the power outlet and has cooled down.
- Holding the handle of the appliance firmly, click open the rear filter at the base of the styler down to open.
- Using a soft brush, clean any hair and other debris that may build up in the filter.
- Replace the rear filter by pushing back into position.

#### Limited Two Year Warranty

This product is subject to the express warranty given on the warranty card included with the product, as may be amended by reference to and in accordance with the terms of the warranty cards displayed on VS Sassoon website [www.vssassoon.com.au](http://www.vssassoon.com.au)

Please retain a copy of your purchase receipt as proof of purchase within the warranty period.

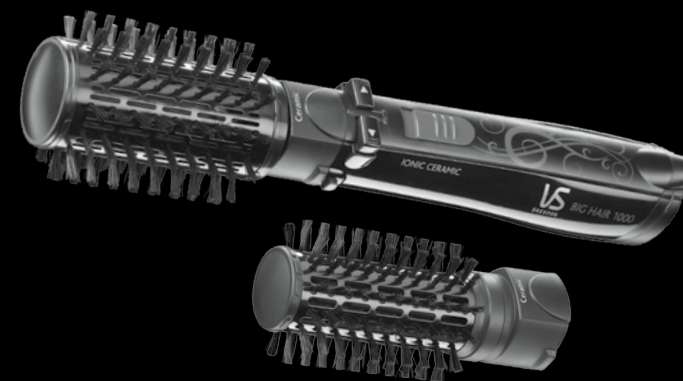
Get more from your styling tools, visit  
**[www.vssassoon.com.au](http://www.vssassoon.com.au)**  
 for news, styling tips and much more.

Vidal Sassoon and related logos are trademarks of  
 The Procter & Gamble Company used under licence by Conair  
 ©2012 Conair Australia Pty Ltd  
 Suites 20 and 21,  
 7 Narabang Way, Belrose NSW 2085  
 Customer Service Hotline (Australia): 1800 650 263  
 Customer Service e-mail: [aus\\_info@conair.com](mailto:aus_info@conair.com)  
 Conair New Zealand Ltd.,  
 PO Box 251159, Pakuranga, Auckland, 1706, New Zealand  
 Customer Service Hotline (New Zealand): 0800 266 247  
 VS2735GA

**VS**  
 SASSOON



**VS**  
 SASSOON



instruction booklet  
 Big Hair Styler 1000

VS2735GA

LONDON • NEW YORK • SYDNEY  
**JOIN THE EVOLUTION.™**