

love^hcare™



portebebehighchair Instruction Manual BP 888

PLEASE KEEP INSTRUCTIONS FOR FUTURE REFERENCE

loveⁿcare™

Congratulations on your new quality Love N Care product from our exclusive range of baby products. This exceptional design combines the most unique features that any baby product offers.

We are confident that you will appreciate its many highlights, including its reliability and durability. Your new product has been manufactured to comply with the Highest Quality Standards and comes with a 12-month warranty.

As you will soon learn there are many more great features about your new Love N Care product.





Safety guidelines and instructions must always be followed before making use of this product, please retain these instructions for future reference.



WARNING: TO AVOID INJURY OR DEATH:

FOLLOW THE MANUFACTURER'S INSTRUCTIONS.

DO NOT LEAVE CHILDREN UNATTENDED.

THE HARNESS MUST ALWAYS BE USED AND CORRECTLY FITTED-MOST INJURIES FROM HIGH CHAIRS ARE CAUSED BY FALLS.

POSITION THE HIGH CHAIR AWAY FROM SOLID STRUCTURES AND BENCHES TO AVOID INJURIES CAUSED BY FALLS AND BY ACCESS TO DANGEROUS ITEMS.

USE THE HARNESS AT ALL TIMES.

THE MAXIMUM WEIGHT FOR THE SEAT UNIT IS 22KG

THE MAXIMUM WEIGHT FOR THE BASKET IS 3KG

THE MAXIMUM TOTAL WEIGHT FOR THE HIGH CHAIR IS 25KG

Use the high chair on a flat, even and horizontal floor. Do not elevate the high chair on any structure or table.

To reduce the risk of injury, please position the high chair away from furniture, walls, hot surfaces and liquids, window covering cords, and electrical cords and position the high chair away from furniture when the chair is not being used as a table.

To avoid serious injury always use the harness provided to secure the child.
(Adjust the straps to suit the body size of your child)The harness can form loops which may be a strangulation hazard.

Never leave a harness connected when not fitted to a child in the high chair.

The highchair should only be used once the child is capable of reliably and consistently sitting upright.

Before placing the child in the high chair ensure that the height locks are fully engaged and the seat is secure.

Please apply brakes when the high chair is stationary.

Do not lift the high chair whilst the child is seated.

Discontinue using the high chair if it is not working correctly and you should contact Love N Care to repair it.

The child should be secured in the high chair at all times by the restraining system either in the reclining or upright position. The tray is not designed to hold the child in the chair. It is recommended that the high chair be used in the upright position only by children capable of sitting upright unassisted.

WHATS INSIDE THE BOX



WHAT SHOULD YOU HAVE INSIDE?

1. rear leg support
2. axel and clips
3. front leg support
4. 2 legs
5. basket
6. front tray
7. height adjustment frame
8. 2 rear castor wheels
9. 2 front wheels
10. front foot rest
11. highchair seat



a philips screw driver is needed for assembly

HOW TO ASSEMBLE

UNFOLD THE FRAME



1. Place the legs (4) in front of you in an upright position.
2. Press the buttons located at the top of the legs to expand the legs.
3. Insert the height adjustment frame (7) through the front tube with the adjustment clips facing inwards or towards the rear legs. The front legs are the ones with the holes on the inner side. Make sure that buttons on the legs are on the outer side.

4. Slide the adjustments until you hear them click into place on the legs.
5. Press the two buttons on the height adjustments and slide them up to the top position. It should click into place



WARNING: ALWAYS ENSURE THAT WHEN THE HEIGHT IS ADJUSTED ON THE SEAT BOTH OF THE SIDES ARE CLIPPED IN CORRECTLY

HOW TO ASSEMBLE

ATTACHING THE WHEELS



1. Place the frame on its side. Make sure the frame is open.
2. Attach the front leg support (3) to the front legs (4). It should connect the left and right side together. Once the legs are on you should screw the support to the frame by using the screws to attach them. The Philips screwdriver should be used to insert the screws located behind the support.
3. Attach the rear leg support (1) to the rear legs (4). It should connect the left and right side together. Once the legs are on you should screw the support to the frame by using the screws to attach them. The Philips screwdriver should be used to insert the screws located behind the support.
4. Insert the 2 front wheels (9) on the front leg support (3). Apply some pressure until you hear a click.
5. Insert the 2 rear wheels (8) on the rear leg support (1). Apply some pressure until you hear a click. The brakes should be facing backwards when inserting the wheels.

HOW TO ASSEMBLE

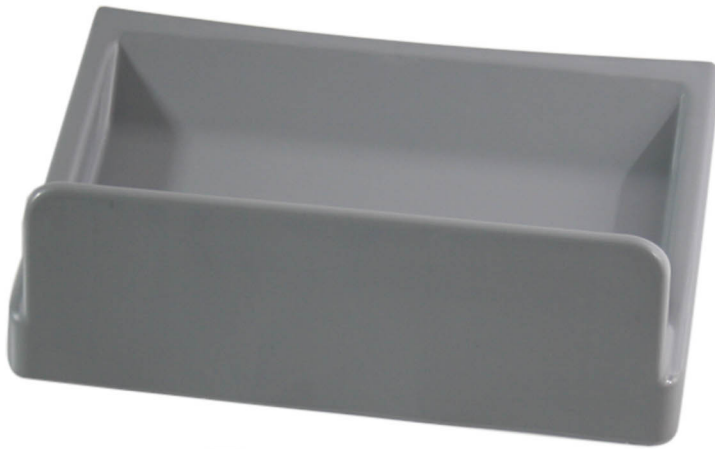
ASSEMBLING THE SEAT



1. The seat will be attached to the frame before we install the footrest
2. Make sure that the insert is over the seat (if you have changed it)
3. Hook the seat (11) onto the seat support located at the top of the height adjustment frame (7)
4. Ensure that the two female slots on the frame are aligned with the corresponding male pieces on the seat.
5. Ensure that the seats are aligned. Slot the axels (2) through the left side of the chair (your right side if facing the highchair). It should come out from the other side of the chair. Attach the clips on the other end to ensure that the bar does not come out of place.

HOW TO ASSEMBLE

ASSEMBLING THE FOOTREST AND MESH BASKET



footrest

1. Align the front foot rest (10) with the slots located on the chair.
2. Start from the left, insert part of the footrest then insert the other part of the footrest on the right side. Then push down until it snaps into place. You should hear it click into place.

mesh basket

1. Attach the basket (5) below the seat by first hooking the 2 end of the basket with the male ends located on the sides.
2. Wrap the 2 ends of the basket around the front pole located under the front seat until you snap the clips together

HOW TO ASSEMBLE INSTALL AND OPERATE THE TRAY



- 1.** Grab either side of the tray **(6)** and use the levers to pull outwards.
- 2.** The tray has a three position adjustment mechanism and can be adjusted to 3 positions depending on the size of your child.
- 3.** When placing into position it should lock into place.

HOW TO ASSEMBLE SEAT RECLINER



recline the seat

1. Press the lever on the back of the seat to activate the reclining mechanism. The highchair has three positions of recline.
2. Do not recline with child seated in the highchair.

adjust the height

1. Press the height adjustment buttons located on each side of the chair, then either pull up or push down to the desired height.
2. Make sure you hear the seat click and lock into place before placing a child into the high chair.

HOW TO ASSEMBLE FOLDING/UNFOLDING



1. Press the buttons located on the arm rest to bring the legs closer together
2. You can press the height adjustment buttons to lower the highchair if needed.



3. You can remove the tray to also give you more compatibility
4. Also the arm rests could be raised up but pressing the release buttons located under the arms.

WARNING: MAKE SURE THAT THE BRAKES ARE ACTIVATED WHEN STORING OR WHEN FEEDING YOUR CHILD.

HOW TO ASSEMBLE USING THE HARNESS



- 1.** Place your child into the seat.
- 2.** Place the crotch strap between their legs.
- 3.** Place the shoulder straps over their shoulders
- 4.** Attach the shoulder straps to the waist strap holder.
- 5.** Insert the waist buckles into the crotch strap housing.
- 6.** Carefully adjust the sliders located on the shoulder, waist and crotch strap. The harness should be snugly fitted to the baby's body tight enough so that the baby cannot wriggle itself free of the straps but loose enough so it doesn't cause it any discomfort.
- 7. To open the harness.** To release the buckle squeeze on the top and bottom prongs simultaneously and pull apart from the buckle housing



USE THIS HARNESS AT ALL TIMES

CLEANING AND MAINTENANCE

ALL LOVE N CARE PRODUCTS HAVE ONE YEAR WARRANTY FROM THE DATE OF PURCHASE.

IT IS RECOMMENDED TO REGULARLY INSPECT AND MAINTAIN MOVEMENT OF LOCKING DEVICES AND SECURITY OF ESSENTIAL COMPONENTS.

REGULARLY CHECK ALL PARTS FOR WEAR AND TEAR.

DO NOT USE SPRAY LUBRICANTS, SIMPLY WIPE CLEAN AFTER USE.

THE SEAT LINER CAN BE CLEANED BY SPONGING WITH WARM SOAPY WATER AND A MILD DETERGENT. A MILD DISINFECTANT MAY BE USED IF DESIRED.

STUBBORN MARKS MAY BE REMOVED WITH A NON ABRASIVE CREAM CLEANER.

NEVER CLEAN WITH ABRASIVE, AMMONIA BASED, BLEACH BASED OR SPIRIT TYPE CLEANERS.

THE TOP TRAY#10 IS DISHWASHER SAFE

THE LOWER TRAY #9 CAN BE CLEANED WITH A DAMP CLOTH.

FABRIC CARE

- HAND WASH ONLY**
- DO NOT BLEACH**
- DO NOT TUMBLE DRY**
- DO NOT IRON**
- DO NOT WRING**
- DO NOT DRY CLEAN**

