



life without limit™

nano™

instructions

IMPORTANT:

**This document contains instructions
and must be kept for future reference.**

Please read thoroughly before use.

please register your product purchase
through our online warranty registration

mountainbuggy.com/register

care Information

if your product is damaged in any way, or you're not sure how to use it, please consult our web support (mountainbuggy.com/support).

caring for nano™

- brush dirt off frame and wheels regularly.
- clean with non-abrasive household cleaner and a soft cloth.
- wash off sand and salt after visiting the beach.
- always dry frame if wet.
- fabrics can be sponge cleaned with warm water, using a mild natural soap. do not use detergents or bleach.
- store in a well ventilated space, away from direct sunlight (which can harm and fade fabric), and moisture.
- take care to avoid damage to foam rubber. foam rubber is not under warranty.
- improper care will void any warranties. do not use the nano™ if deterioration is detected or suspected.

important information

- always load / unload your child on level ground.
- ensure the brake is engaged during the loading and unloading of child.
- care should be taken if the stroller is used on stairs. recommended not to go up or down escalators.
- always use the safety strap.
- excessive wear can reduce effectiveness and safety.
- parts may need lubrication.
- inspect essential components for:
 - fraying – especially webbing straps and safety harness.
 - wear – locks, snap fasteners, tyres, plastic and moving parts.
 - safety – locks must not be loose.

important information

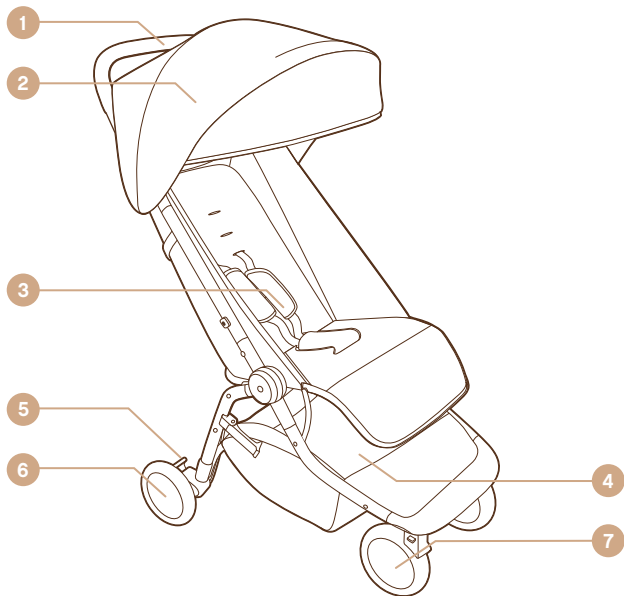
EVA tyres

- tyres are not under warranty.
- the nano uses EVA tyres on the front and rear – these are immune from punctures and eliminate the need for tube replacements etc.
- with use, the surface of the EVA tyre can show signs of minor pitting – this is normal for this material, and this does not affect performance of the product.



for more information on caring for your product, visit **mountainbuggy.com/support**







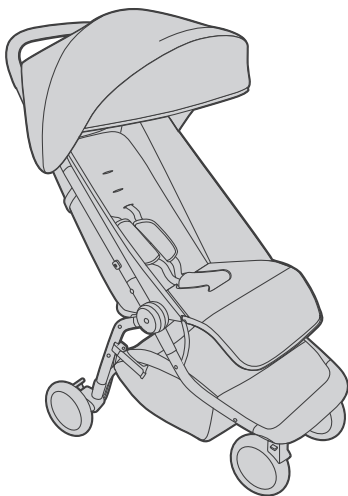
- 1 handlebar
- 2 sun hood
- 3 harness
- 4 parcel tray
(5kg / 11lbs)
- 5 brake
- 6 rear wheels
- 7 front Wheels



- | | | | |
|----------|---|----------|--|
| 1 | Guidon | 1 | Griff |
| 2 | apote | 2 | Sonnenverdeck |
| 3 | Harnais | 3 | Gurt |
| 4 | Panier de rangement
(max load 5kg / 11lbs) | 4 | Gepäckablage (maximale
Belastung 5kg / 11lbs) |
| 5 | Frein | 5 | Bremse |
| 6 | Roé arrière | 6 | Hinterräder |
| 7 | Roué avant | 7 | Vorderräder |



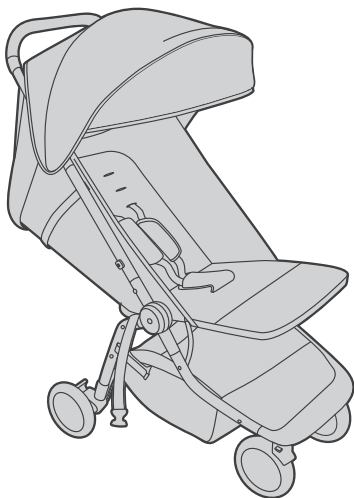
- | | | | |
|----------|--|----------|--|
| 1 | Manillar | 1 | Duwstang |
| 2 | Tapa sol | 2 | Zonnekap |
| 3 | Arnés | 3 | Veiligheidsharnas |
| 4 | Canastilla
(carga máx. 5kg / 11lbs) | 4 | Boodschappenmandje
(max load 5kg / 11lbs) |
| 5 | Freno | 5 | Rem |
| 6 | Llantas traseras | 6 | Achterwielen |
| 7 | Llantas delanteras | 7 | Vorwielen |



A

max load

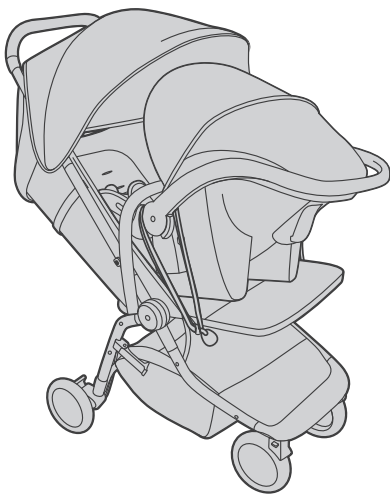
20kg / 44lbs



B

max load

20kg / 44lbs



C

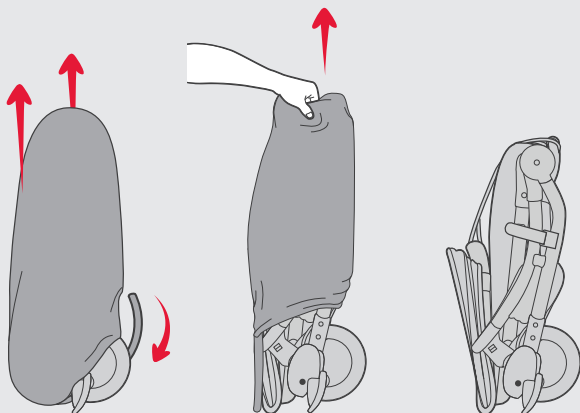
max load

13kg / 28lbs

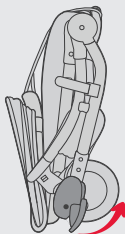




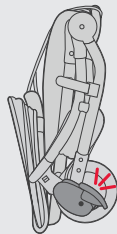
1

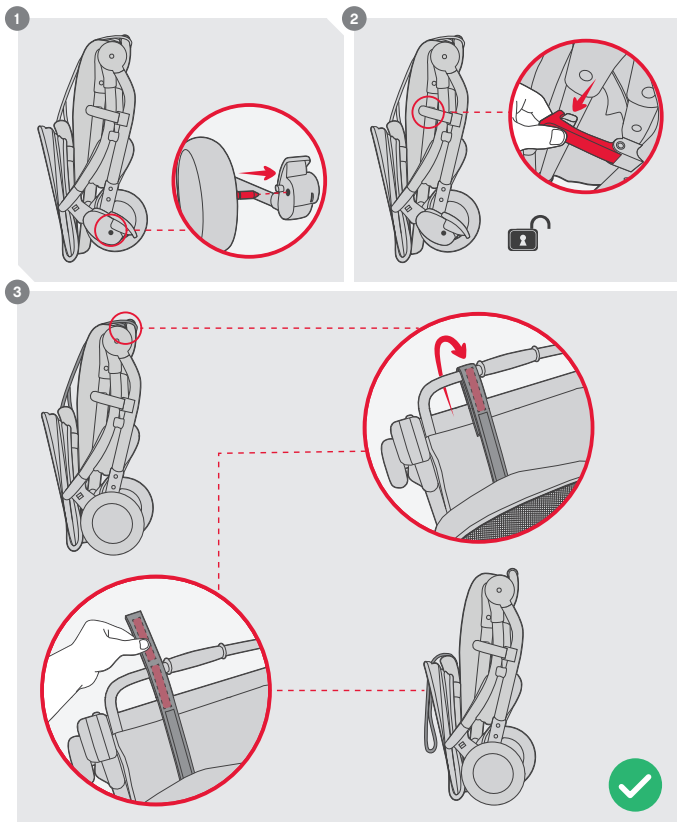


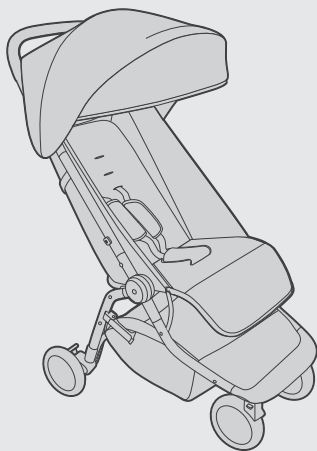
2



3



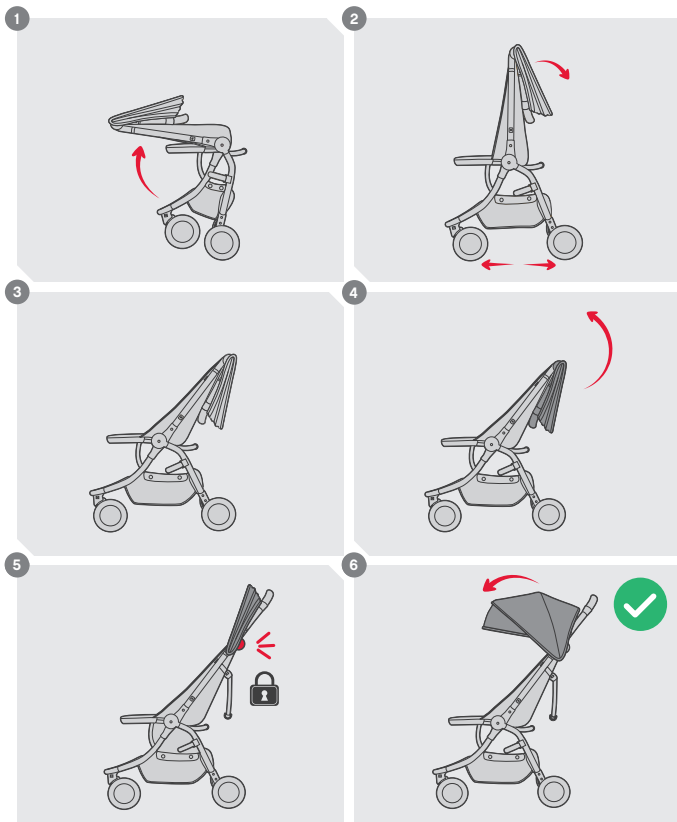


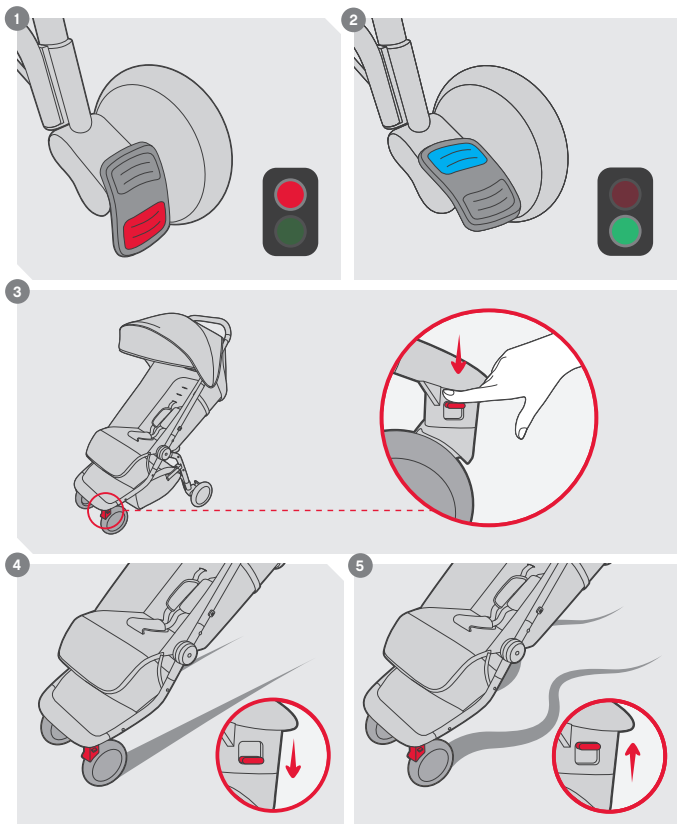


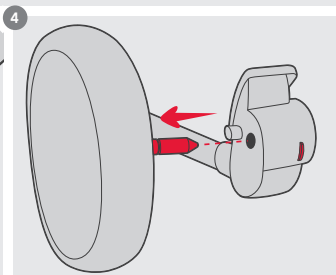
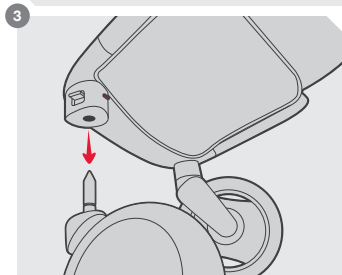
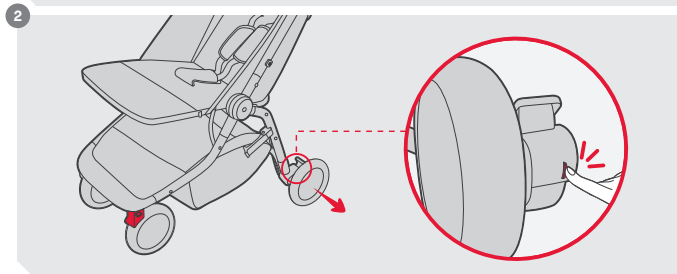
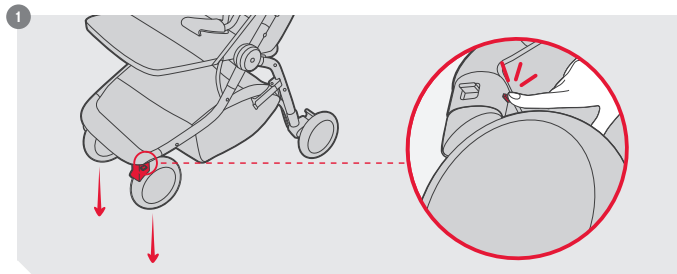
A

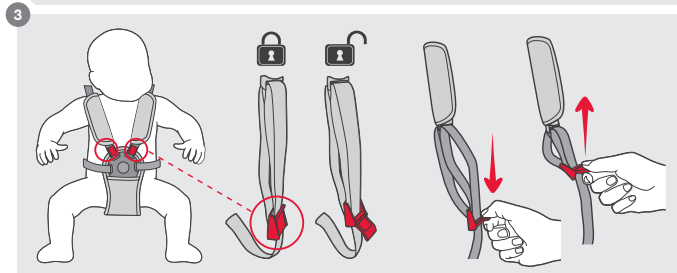
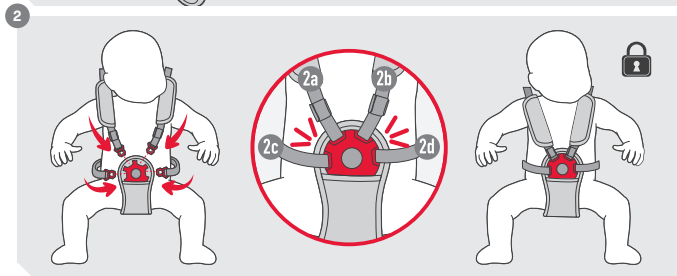
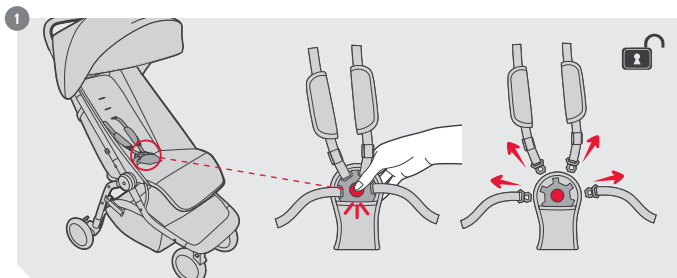
max load

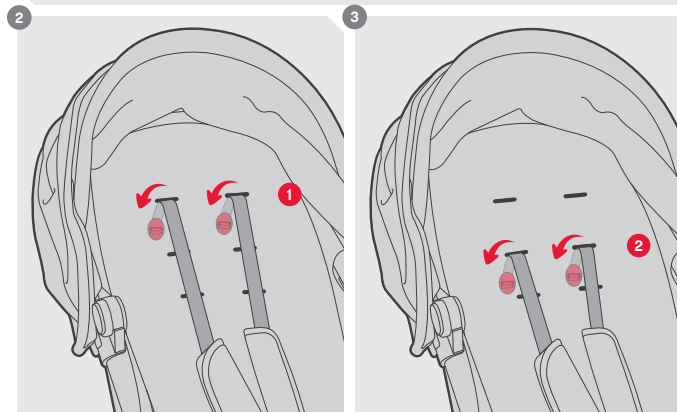
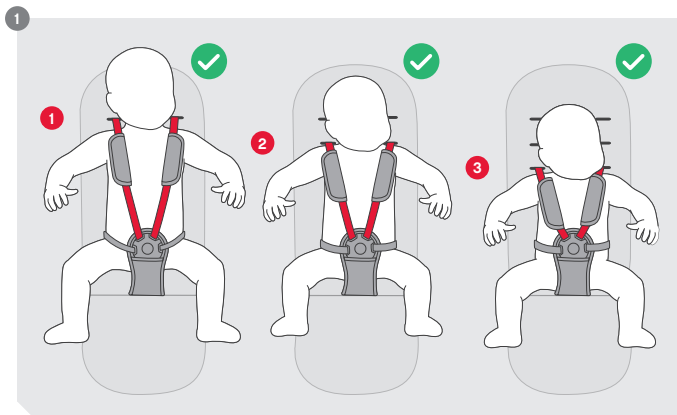
20kg / 44lbs

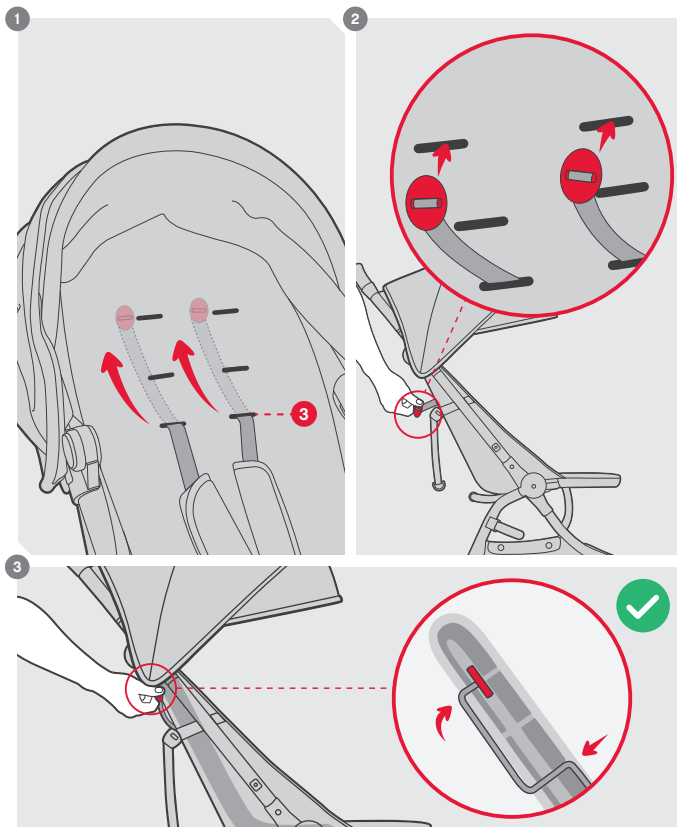


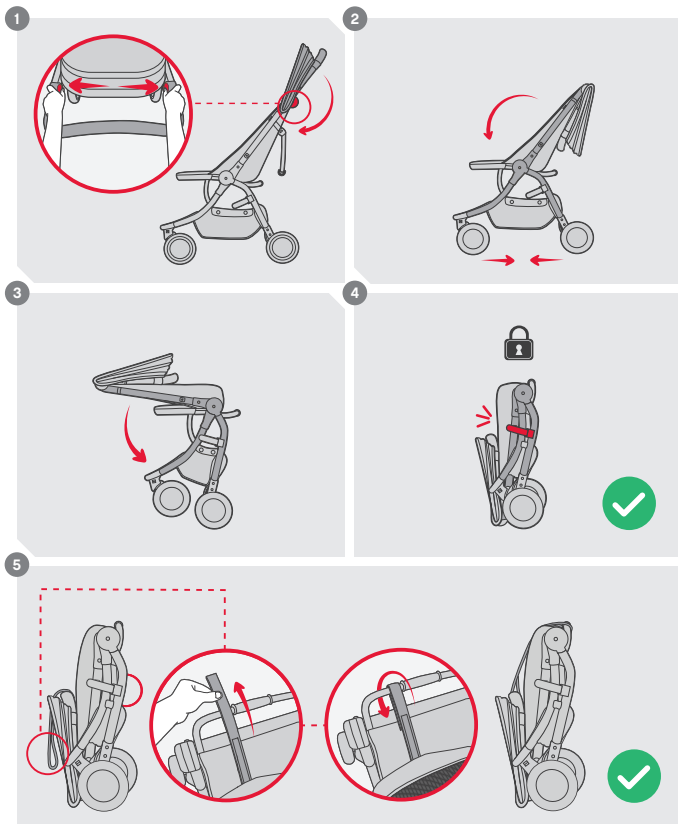


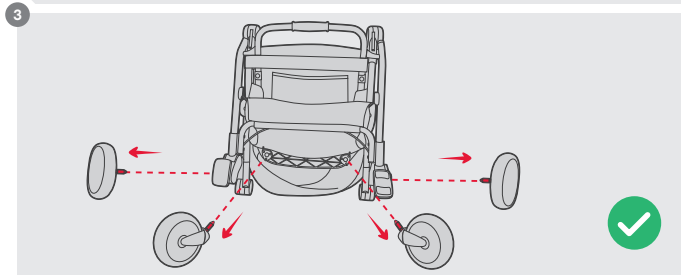
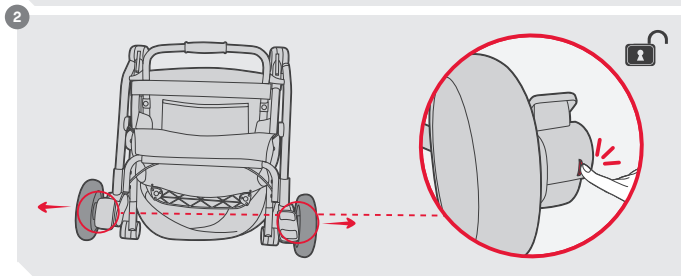
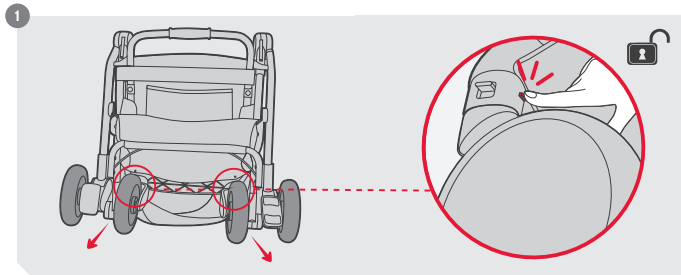


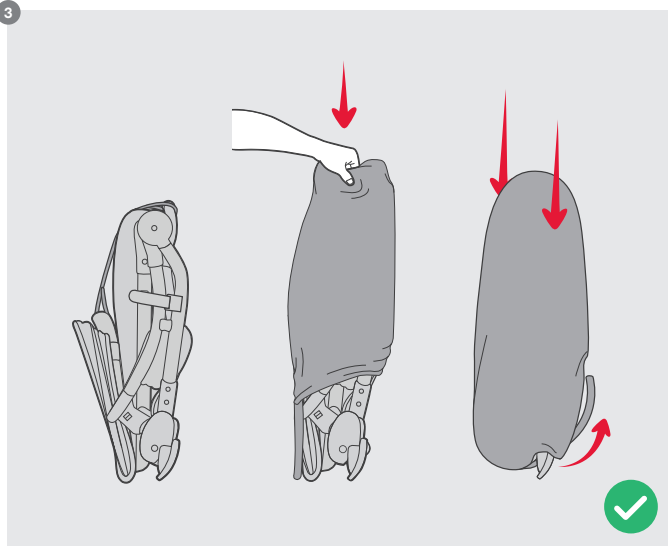
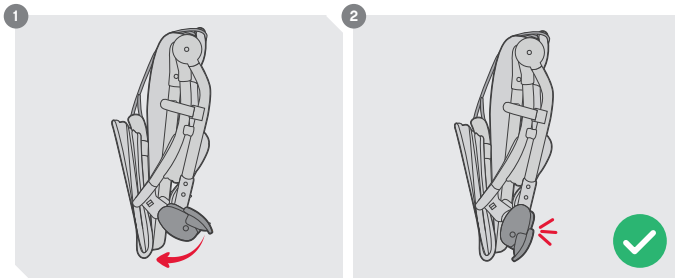


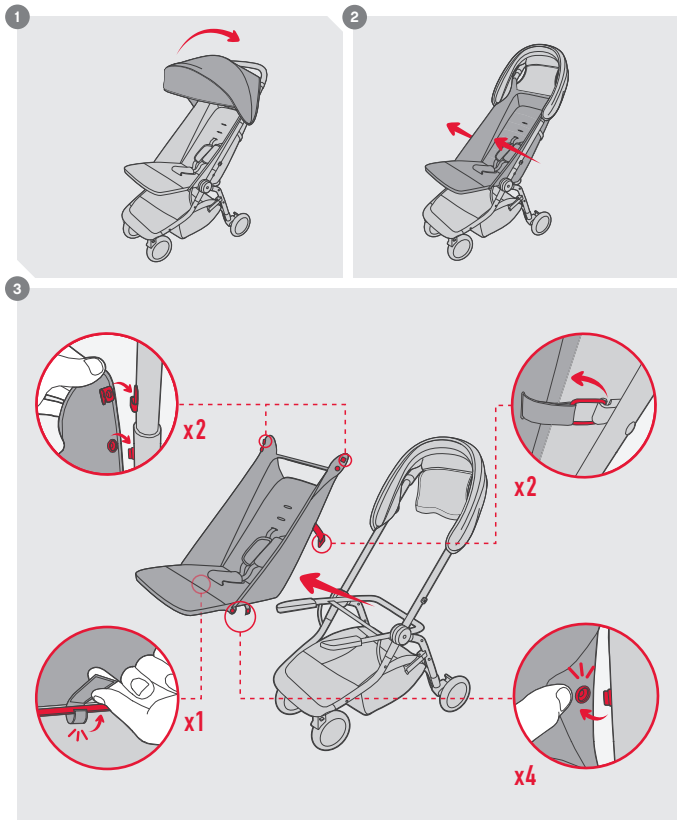


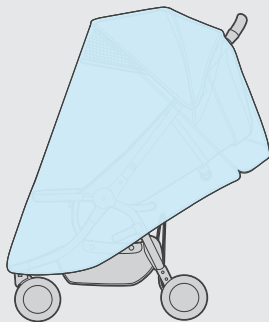
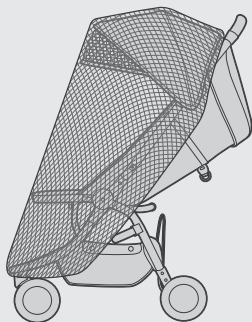




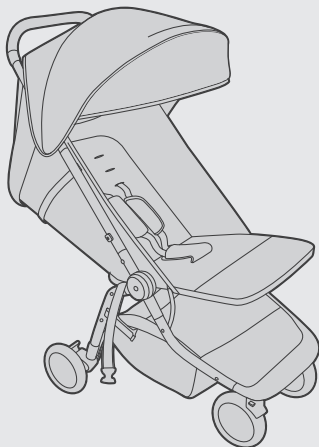








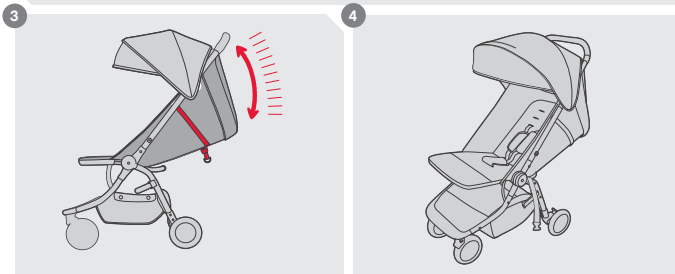
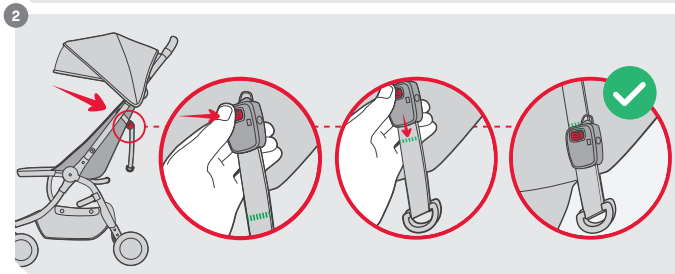
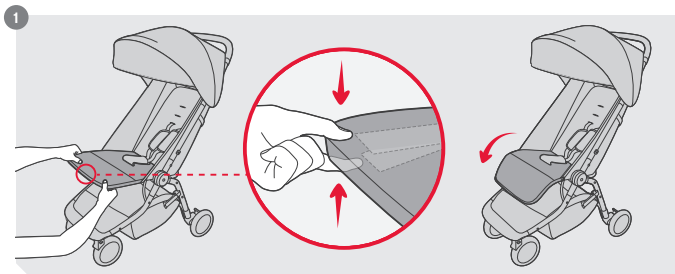
*Covers sold separately

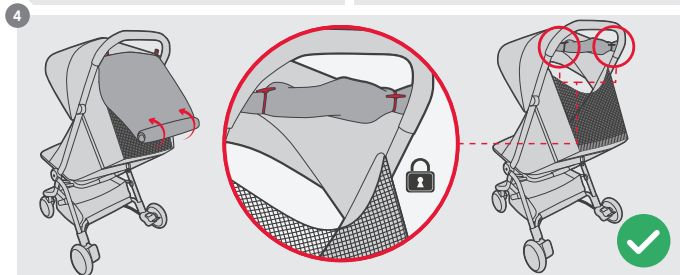
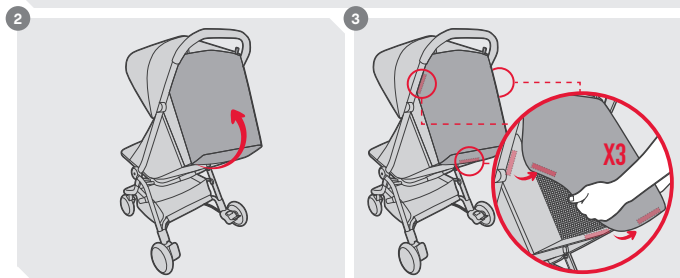
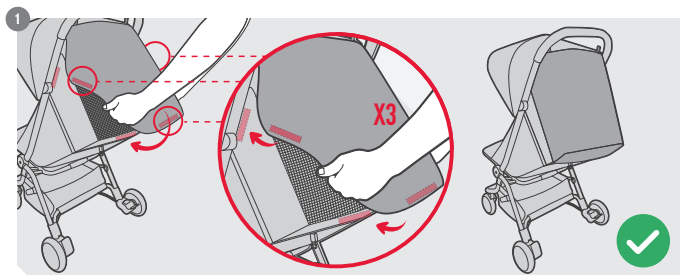


B

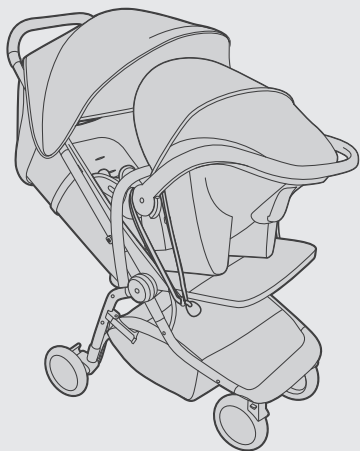
max load

20kg / 44lbs





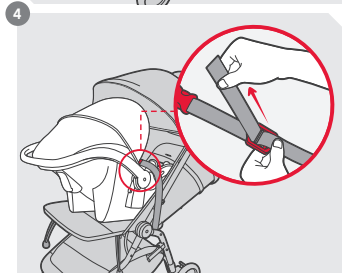
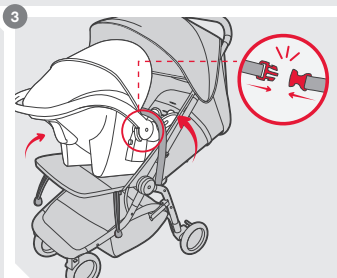
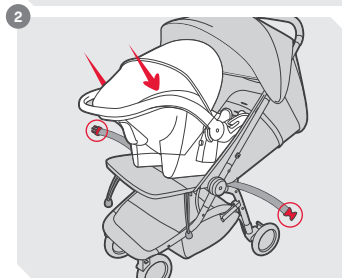
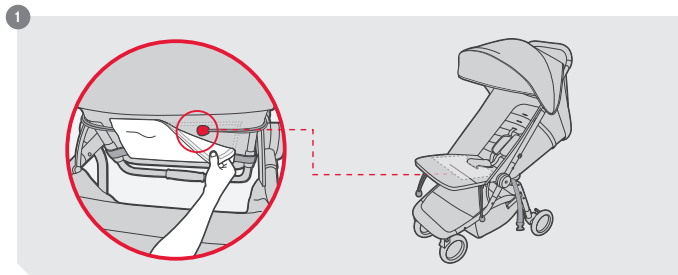


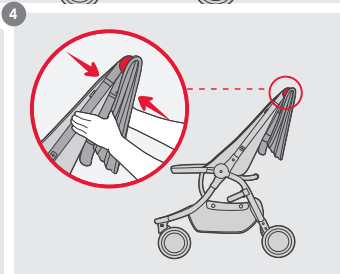
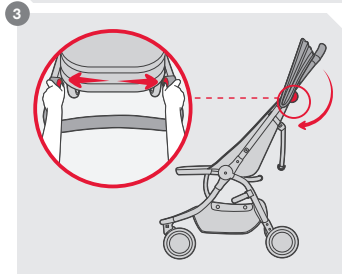
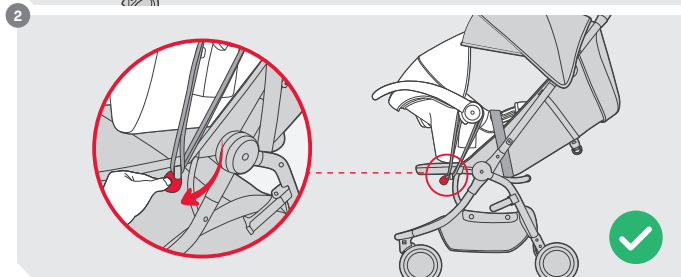
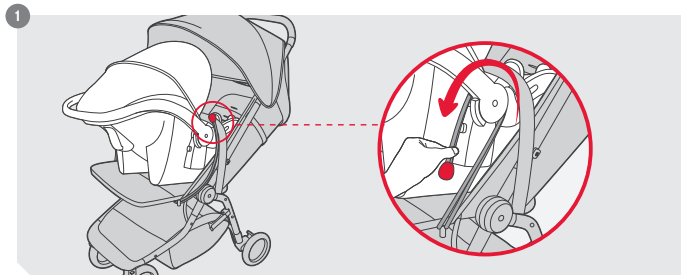


C

max load

13kg / 28lbs













life without limit™

AUS/NZL

Mountain Buggy Australasia
102-112 Daniell Street
Newtown, Wellington 6021
New Zealand
+ 64 4 3800 833

EUR

Mountain Buggy Spain
Calle Casas de Campos
N°15, 3ª Planta
Malaga 29001, Spain
+34-91-290 14 82

GBR

Mountain Buggy UK
71-73 Victoria St
Windsor, Berkshire
SL4 1EH, United Kingdom
+44 (0) 20-30519264

USA/CAN

Mountain Buggy USA
221 Jefferson Street
Fort Collins, CO 80524
USA
1 800 916 8442

CHN

Mountain Buggy China
No.10 East Chuangyeyuan
Road, Yangzhou
China
0086-514-87634533

Designed in New Zealand. Made in China
Conçu en Nouvelle-Zélande. Fabriqué en Chine

Conforme aux exigences de sécurité

8156-07