

# EXPRESSI®

multi - beverage  
capsule machine



QUICK START GUIDE



## Machines – Overview

- 1 Drip grating
- 2 Spent capsule container
- 3 Capsule insertion opening
- 4 Lever
- 5 Water tank
- 6 Controls
- 7 Spout
- 8 Height-adjustable drip tray



Please read the safety instructions first.

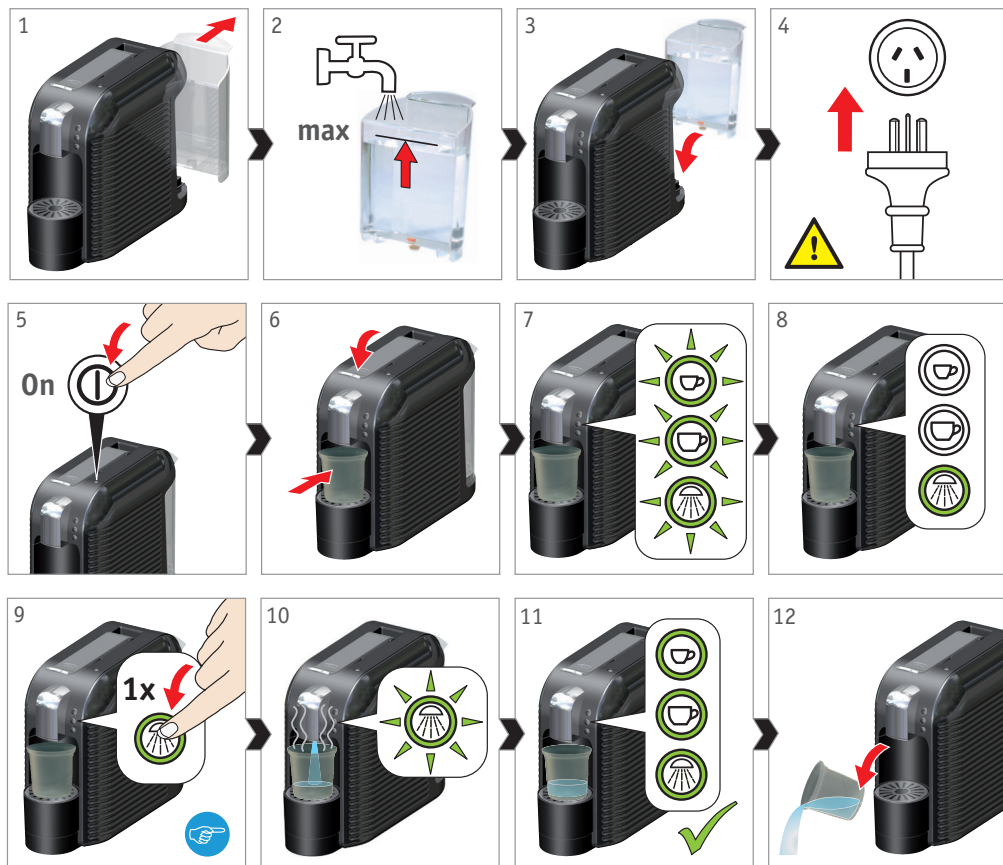


Read the full instruction manual before use.  
This quick start guide only gives basic usage instructions.



Recommendations for first startup:  
Press the rinsing button 5 times to rinse the machine thoroughly.

## Start-up



## Preparing beverages

### EXPRESSI® ESPRESSO

Insert the EXPRESSI® Espresso capsule and select your desired cup size. Once coffee is extracted, lift lever to dispense the used capsule and enjoy your coffee. Take care – capsules are hot after extraction.



### EXPRESSI® HOT CHOCOLATE

Insert the EXPRESSI® Hot Chocolate capsule and select the large cup button (110mL). Once hot chocolate is extracted, lift lever to dispense the used capsule. Take care – capsules are hot after extraction.



### EXPRESSI® CHAI LATTE

Insert the EXPRESSI® Chai latte capsule and select the large cup button (110mL). Once tea with milk is extracted, lift lever to dispense the used capsule. Take care – capsules are hot after extraction.





After Sales Support:

Telephone: 1800 469 373

Email: [mail@k-fee-system.com.au](mailto:mail@k-fee-system.com.au)